

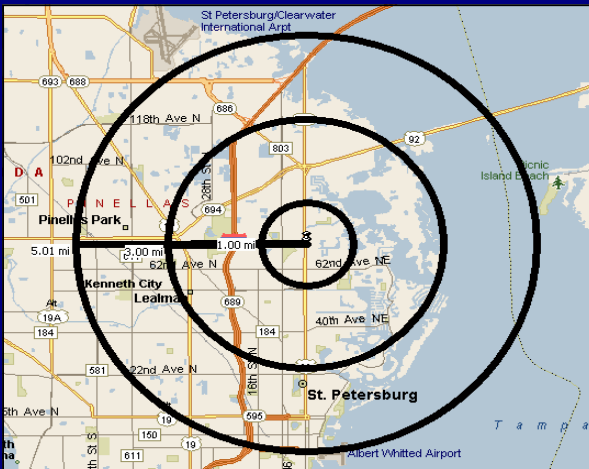


FOR LEASE! 4th STREET RESTAURANT / BANK / RETAIL SITE!



MAINSTREAM SQUARE

SEC of 4th St North & 72nd Ave North Saint Petersburg, Florida



	<u>1 Mile</u>	<u>3 Mile</u>	<u>5 Mile</u>
Population:	14,690	89,179	188,076
Avg HH Inc:	\$50,761	\$57,434	\$54,544
Avg Vehicles PD:	38,000 on 4th Street North		

PROPERTY HIGHLIGHTS

- **For Lease or Build-To-Suit ! 315' of frontage on 4th Street ! Hard-lighted corner !**
- **Located in Saint Petersburg's premier retail corridor at the SEC of 4th Street North and 72nd Avenue North**
- **Less than 2 miles south of the intersection of 4th Street & Gandy Boulevard**
- **Area retailers include Bonefish Grill, Publix, McDonald's, Target, Starbucks, Subway, Winghouse, Burger King and more !**
- **Excellent Restaurant, Bank or Retail Location ! ± 9,200sf available !**

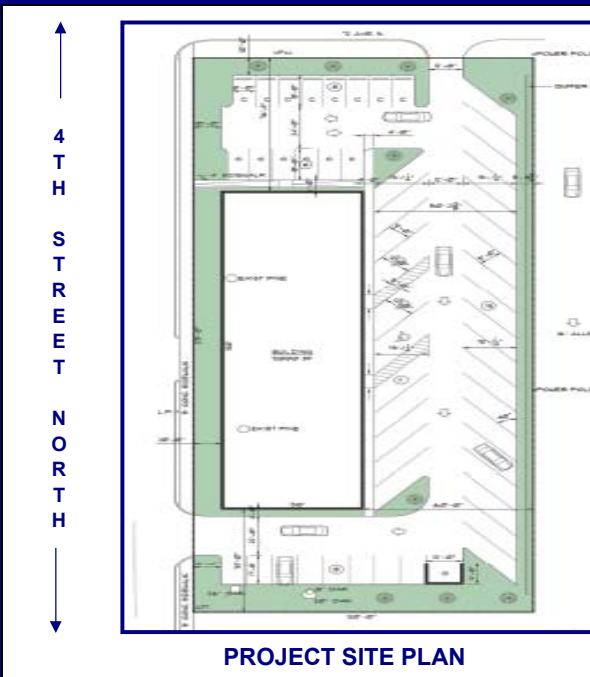
**FOR MORE INFORMATION CALL:
(727) 823-1605**

BANK OF AMERICA TOWER | 200 CENTRAL AVE | SAINT PETERSBURG, FL | 33701

PHONE: (727) 823-1605 | FAX: (727) 897-9579 | WEBSITE: www.gulfcoastcommercial.net



AERIAL PHOTO



PROJECT SITE PLAN

FOR MORE INFO CALL:
(727) 823-1605

FOR ADDITIONAL
COMMERCIAL REAL ESTATE
OPPORTUNITIES PLEASE
VISIT OUR WEBSITE:

WWW.GULF COASTCOMMERCIAL.NET