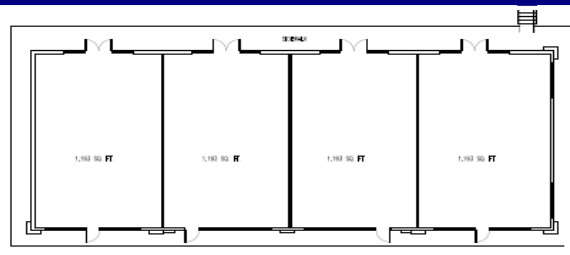
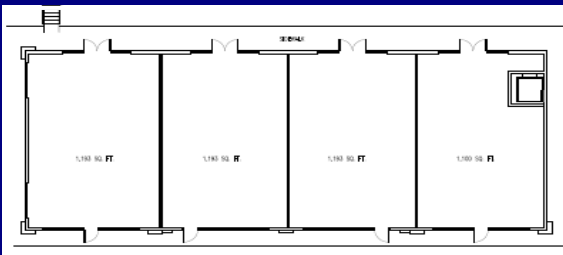




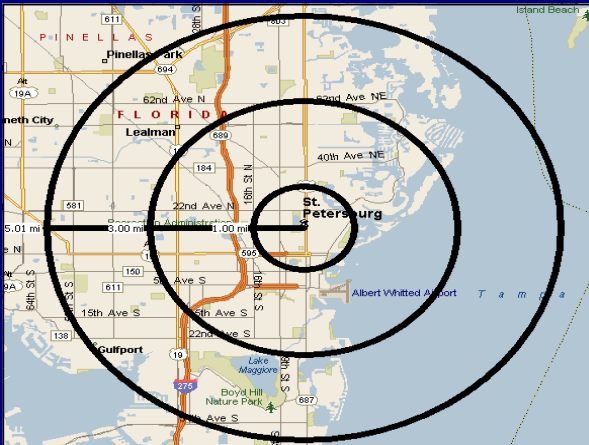
**AVAILABLE FOR LEASE ! 4th STREET RETAIL ! ± 9,750 SF**



# Shoppes at Garden Place



**NWC of 4th St North & 13th Ave North Saint Petersburg, FL 33701**



	<u>1 Mile</u>	<u>3 Mile</u>	<u>5 Mile</u>
Population:	14,690	89,179	188,076
Avg HH Inc:	\$50,761	\$57,434	\$54,544
Avg Vehicles PD:	<b>38,000 on 4th Street North</b>		

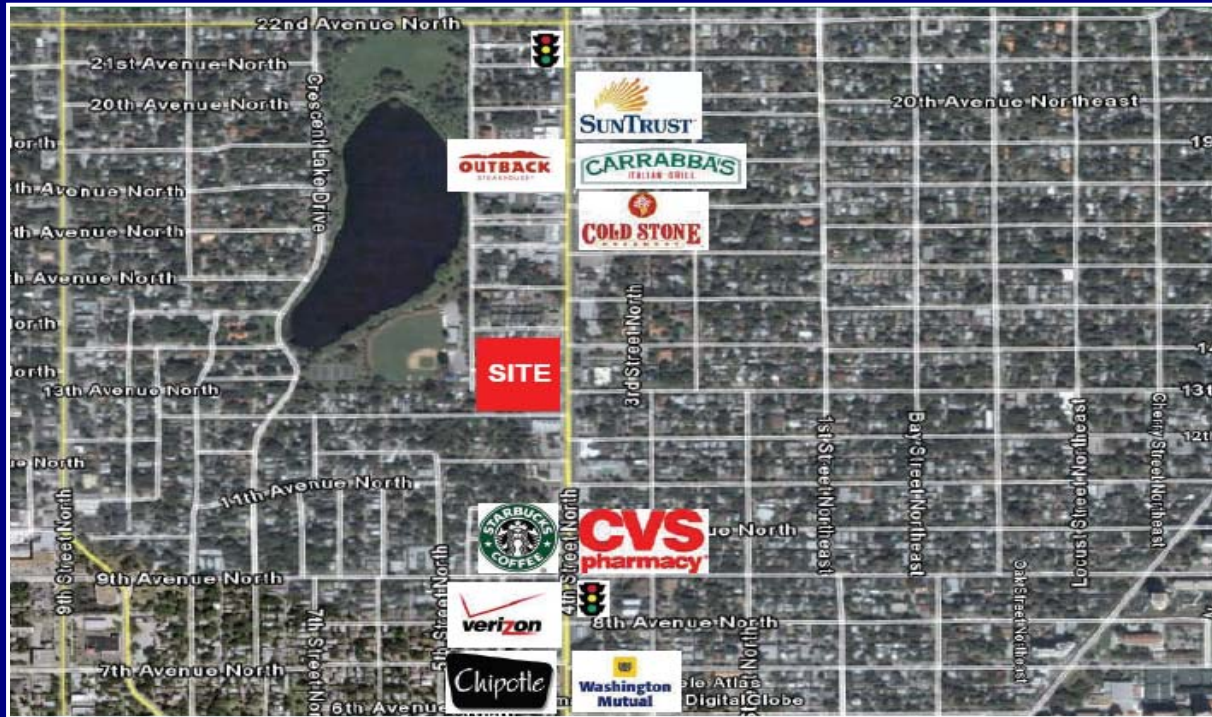
## PROPERTY HIGHLIGHTS

- **For Lease or Build-To-Suit !**
- **± 9,750 square feet**
- **Located in Saint Petersburg's premier retail corridor, just blocks north of the downtown Central Business District**
- **Excellent Bank, Restaurant, or Retail Location !**

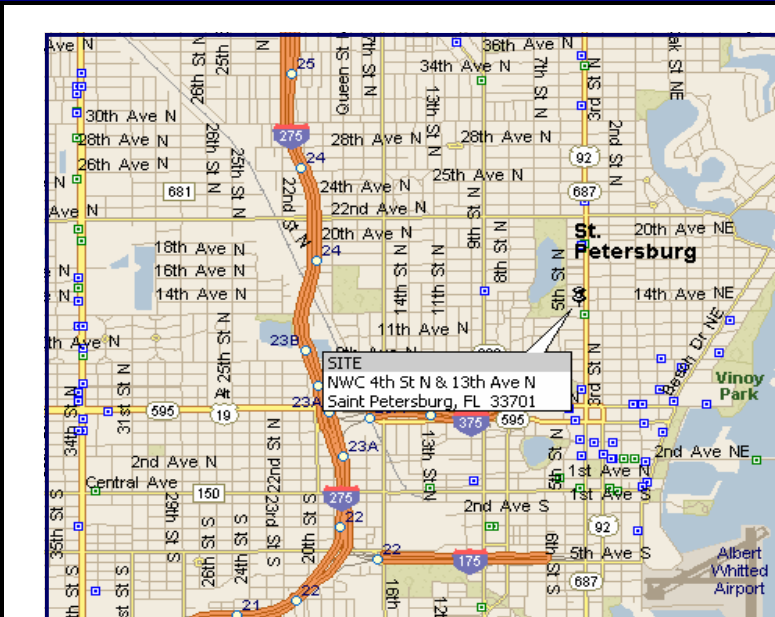
**FOR MORE INFORMATION CALL:  
(727) 823-1605**

**BANK OF AMERICA TOWER | 200 CENTRAL AVE, SUITE 2200 | SAINT PETERSBURG, FL | 33701**

**PHONE: (727) 823-1605 | FAX: (727) 897-9579 | WEBSITE: [www.gulfcoastcommercial.net](http://www.gulfcoastcommercial.net)**



AERIAL PHOTO



AREA MAP

FOR MORE INFO CALL:  
**(727) 823-1605**

FOR ADDITIONAL  
COMMERCIAL REAL ESTATE  
OPPORTUNITIES PLEASE  
VISIT OUR WEBSITE:

[WWW.GULFcoastCOMMERCIAL.NET](http://WWW.GULFcoastCOMMERCIAL.NET)

BANK OF AMERICA TOWER | 200 CENTRAL AVE, SUITE 2200 | SAINT PETERSBURG, FL | 33701

PHONE: (727) 823-1605 | FAX: (727) 897-9579 | WEBSITE: [www.gulfcoastcommercial.net](http://www.gulfcoastcommercial.net)